



Geospatial Intelligence: Global Solutions for Safety and Efficiency

May 2025



Forward-Looking Disclaimer



Certain information provided in this presentation, including reference to revenue growth, constitutes forward-looking statements. The words “anticipate”, “expect”, “project”, “estimate”, “forecast”, “continue”, “focus”, “will”, “intends” and similar expressions are intended to identify such forward-looking statements. Although Intermap believes that these statements are based on information and assumptions which are current, reasonable and complete, these statements are necessarily subject to a variety of known and unknown risks and uncertainties. Intermap’s forward-looking statements are subject to risks and uncertainties pertaining to, among other things, cash available to fund operations, availability of capital, revenue fluctuations, nature of government contracts, economic conditions, loss of key customers, retention and availability of executive talent, competing technologies, common share price volatility, loss of proprietary information, software functionality, internet and system infrastructure functionality, information technology security, breakdown of strategic alliances, and international and political considerations, as well as those risks and uncertainties discussed Intermap’s Annual Information Form and other securities filings. While the Company makes these forward-looking statements in good faith, should one or more of these risks or uncertainties materialize, or should underlying assumptions prove incorrect, actual results may vary significantly from those expected. Accordingly, no assurances can be given that any of the events anticipated by the forward-looking statements will transpire or occur, or if any of them do so, what benefits that the Company will derive therefrom. All subsequent forward-looking statements, whether written or oral, attributable to Intermap or persons acting on its behalf are expressly qualified in their entirety by these cautionary statements. The forward-looking statements contained in this presentation are made as at the date of this presentation and the Company does not undertake any obligation to update publicly or to revise any of the forward-looking statements made herein, whether as a result of new information, future events or otherwise, except as may be required by applicable securities law.

Intermap Technologies is a geospatial intelligence provider, producing 3D digital representations of Earth's surface and the features on it

Customers subscribe to recurring services that offer precision solutions for non-expert users

- Governments rely on Intermap for national mapping programs, new technology and R&D
- Commercial applications include insurance, aviation, telecom, energy, climate resilience and space

Founded in 1997, headquartered in Denver, with engineering in Calgary, software development in Prague and data production in Jakarta, Intermap experience includes 61 countries

Intermap's Global Mapping Scale



**Intermap has mapped
more than 300 million km²
of terrain in 150+ countries**



**The total land area on Earth is
approximately 149 million km²**

Investor Tear Sheet



Intermap Technologies Corporation		IMP.TO Stock Statistics	
Sector	Technology/Software – Application	2024 Stock Performance	322%
Tickers	IMP.TO (TSX); ITMSF (OTCQB)	Float as % of Shares Outstanding	88.7%
Headquarters	Englewood, CO USA	30-Day Average Daily Trading Volume	282,520
Employees	72	30-Day VWAP	CAD 1.98
Transfer Agent	Odyssey Trust Company	Insider Ownership (1)	11.30%
Auditor	KPMG, LLP	Chairman and CEO	10.75%

Capitalization (US\$) and Key Metrics			
<u>Capitalization</u>		<u>2025 Guidance</u>	
IMP.TO Price per Share	CAD 2.27	Revenue	32,500
Shares Outstanding (M)	59.1	Adjusted EBITDA (3)	9,100
Market Cap	\$93,165	Margin	28%
Net Debt/(Cash)	(\$6,470)		
Enterprise Value (2)	\$86,695		
<u>Valuation - 2025 Guidance</u>			
Enterprise Value / Revenue	2.7x		
Enterprise Value / Adjusted EBITDA	9.5x		

Source: Company filings and press releases. All dollar amounts presented in US\$'000s.

(1) Common shares owned, controlled or directed, directly as of 12/31/23, adjusted for 3Q private placement, as % of current outstanding shares

(2) Market data as of close beneficially 01/09/25 and share count as of 09/30/24. Balance sheet as of 09/30/24. Net debt/(cash) includes lease obligations and the fair value of an investment in a privately held company

(3) Excludes working capital investment, share-based compensation, fair value adjustments and foreign currency translation

Q1 Financial Results



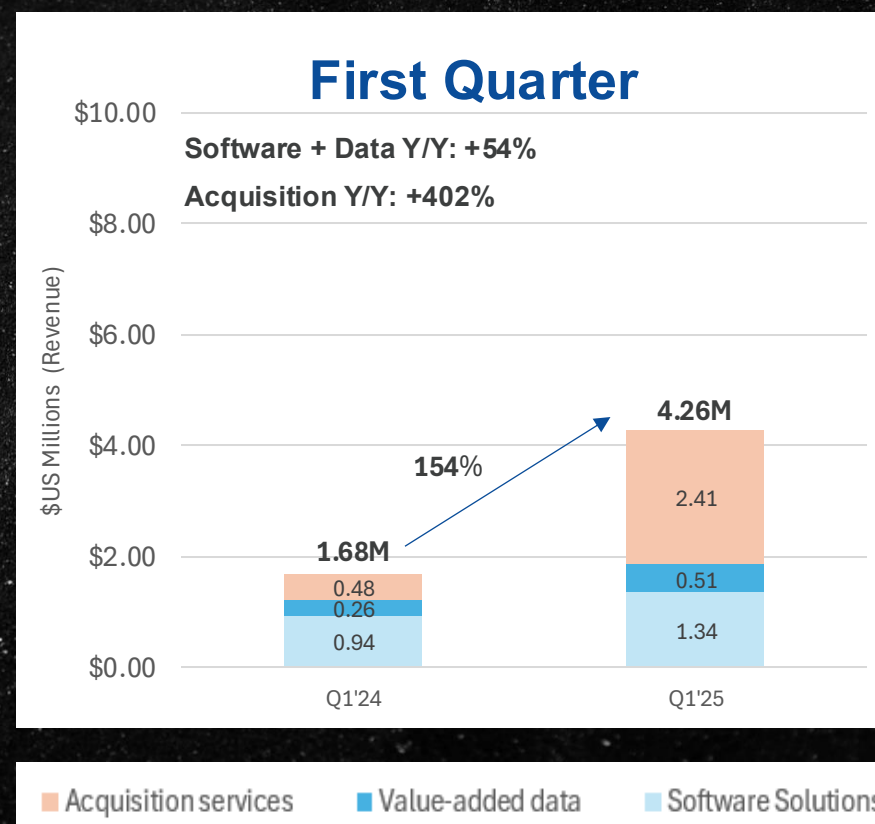
As Intermap continued to execute its business plan in the first quarter, revenue has accelerated to form a solid foundation for future growth

Intermap delivered \$4.3M in revenue in Q1 2025, up 154% from the same period last year

Intermap delivered 28% proforma adjusted EBITDA margin and a proforma net income of \$833 thousand, adjusted for partner related delays

Accounts Receivable of \$6.5M grew 1030% from the first quarter of 2024

Cash, Accounts Receivable and Unbilled Revenue totaled \$13.9M at the end of Q1'25



Q1 2025 Milestones



- More than 60 global insurance companies subscribe to Intermap's proprietary elevation data
- Intermap is developing solutions for over 60 governments and agencies around the world
- More than \$1.1 million in new and renewed insurance contracts secured in Q1
- Signed multiyear partnerships with a major European bank-insurance group and PREMIUM Insurance in Central Europe
- Selected as a vendor on the U.S. NGA's \$200 million Luno B contract with CACI
- Intermap grew its partnership with a major space-launch and satellite communications provider to establish a world-class network and support civilian and military requirements
- Intermap is developing follow-on awards in Indonesia, Malaysia and South America
- Intermap is transferring lessons learned in Indonesia to reduce latencies and expand product offerings and capabilities for commercial segments
- Intermap will open new markets in Southeast Asia that allow customers to expand their programs and domestic providers to build new ones

Financial Growth 2021-2025

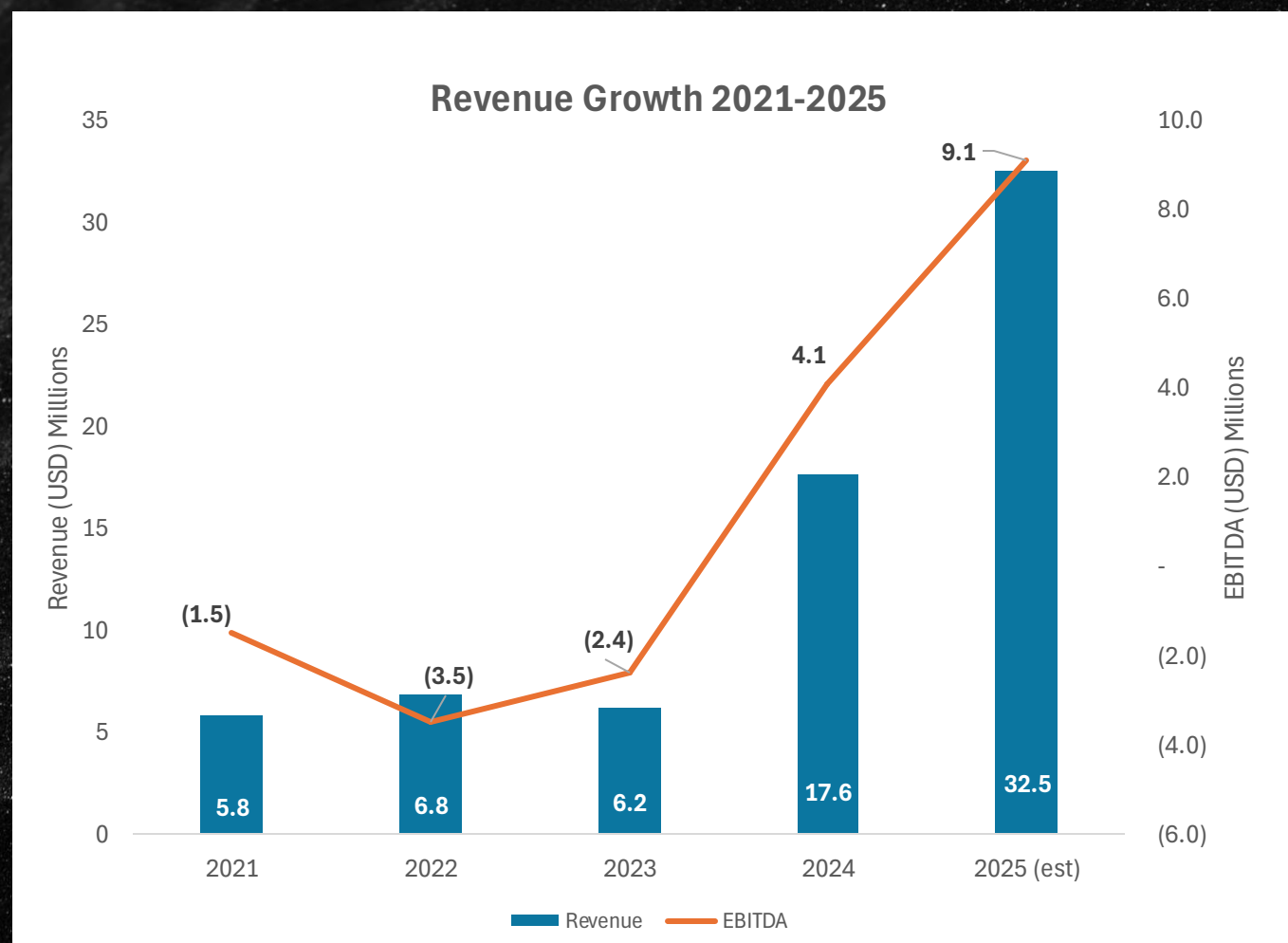


From 2023 to 2024,
Intermap's revenue
nearly doubled

EBITDA, net income and
EPS all turned positive in
2024

Return on capital of 6.3%
in 2024

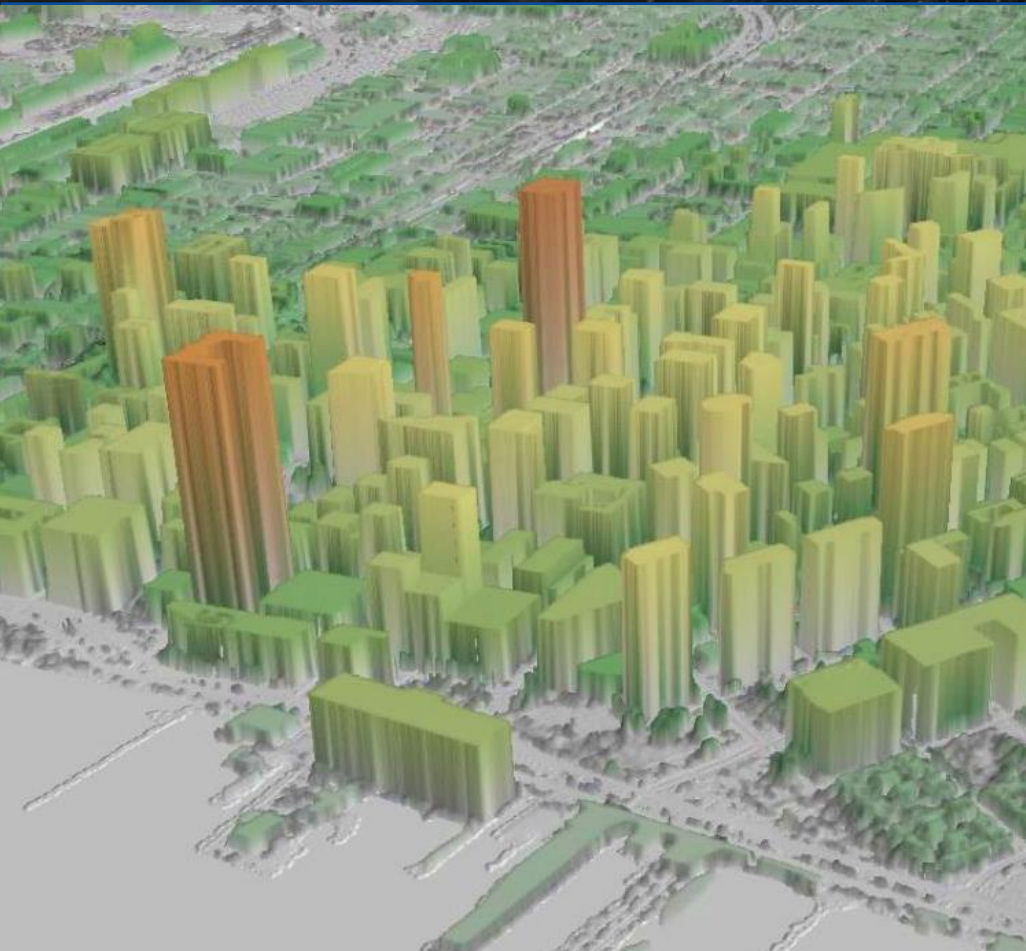
Projected 2025 revenue of
\$30-35M and 28% adjusted
EBITDA margin.



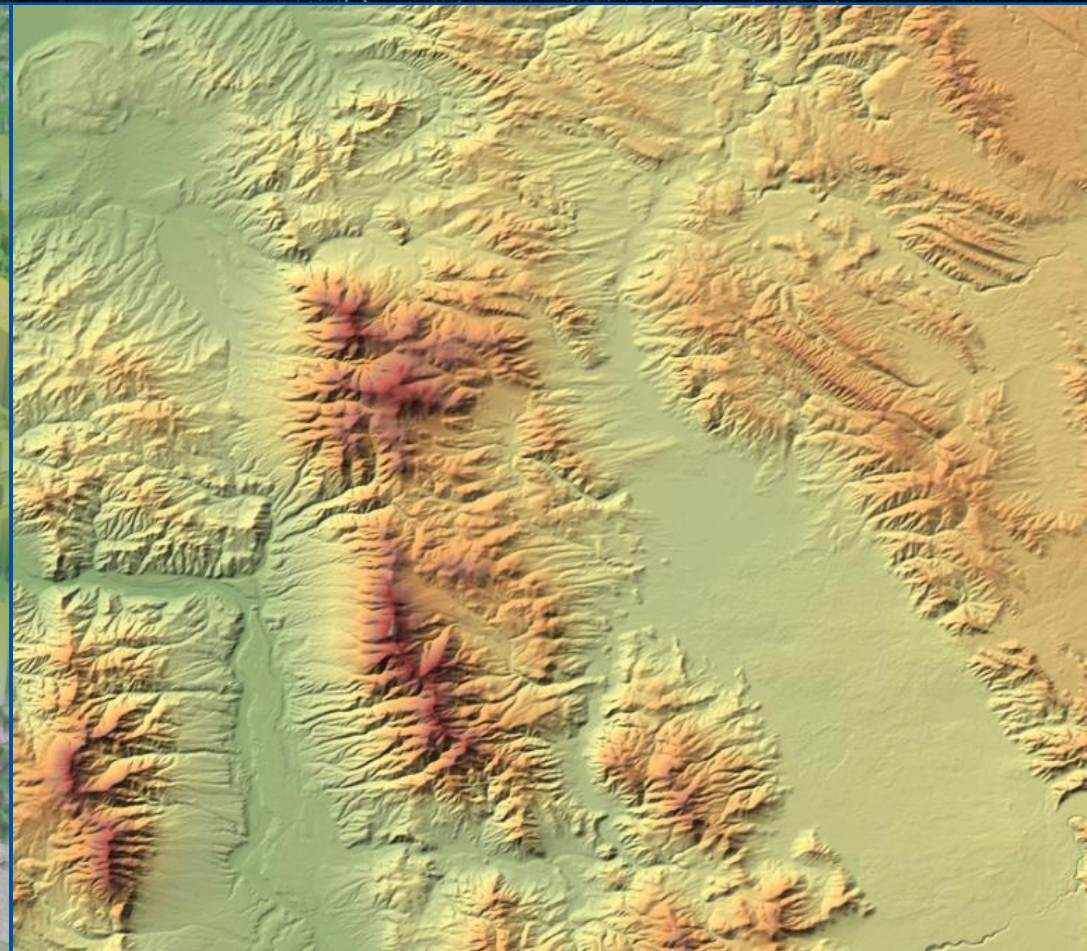
Elevation Data Is a 3D Digital Model of Earth



Digital Surface Models (DSM) include features like trees, roads and buildings. Used for urban planning, telecom, aviation, engineering and construction



Digital Terrain Models (DTM) represent the bare earth with surface features removed. Used for flood modeling, land use studies and renewable energy planning



3D Visualization with Imagery

Intermap's elevation models can be layered with satellite imagery to provide realistic 3D visualization



Intermap's 1m Elevation Data



Free Elevation Data

Saving Lives: Blackrock Island, Ireland



During a mission in 2017, a rescue helicopter struck an island that wasn't in the onboard terrain warning database

Data onboard the helicopter

NEXTView shows more than a 50-meter difference compared with the data on the helicopter

NEXTView

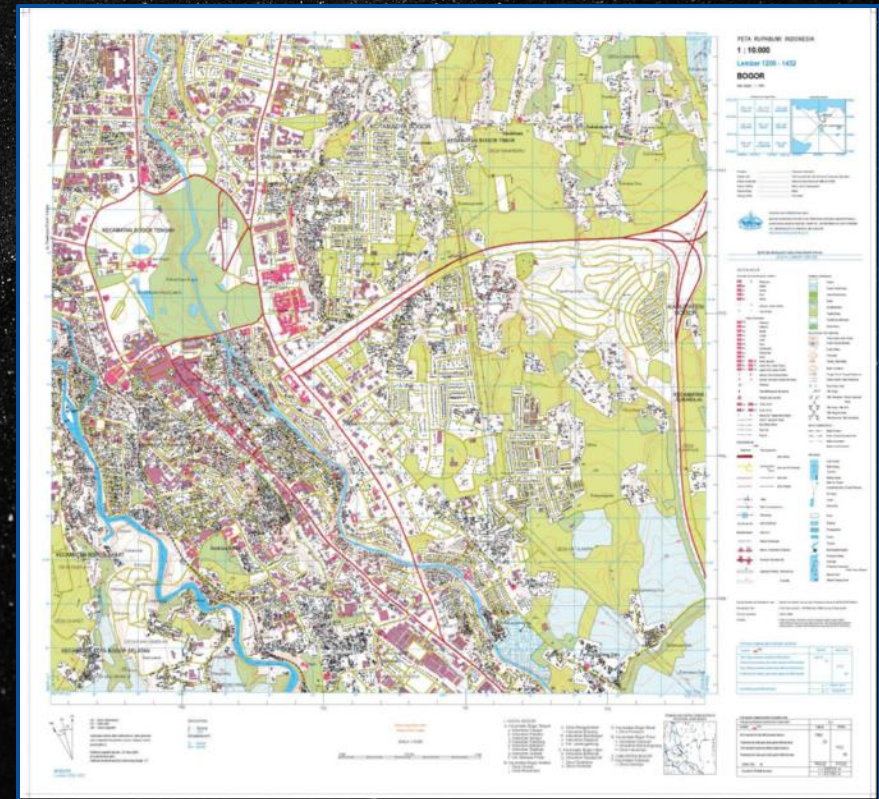
3D Datasets for Government Basemaps

Intermap's collection and processing capabilities enable governments to integrate geospatial data into national and global operations

- **Basemaps** are reference maps composed of different layers of geospatial data, such as terrain, buildings, roads and land type, and are fundamental building blocks to provide context and visual references for a variety of applications

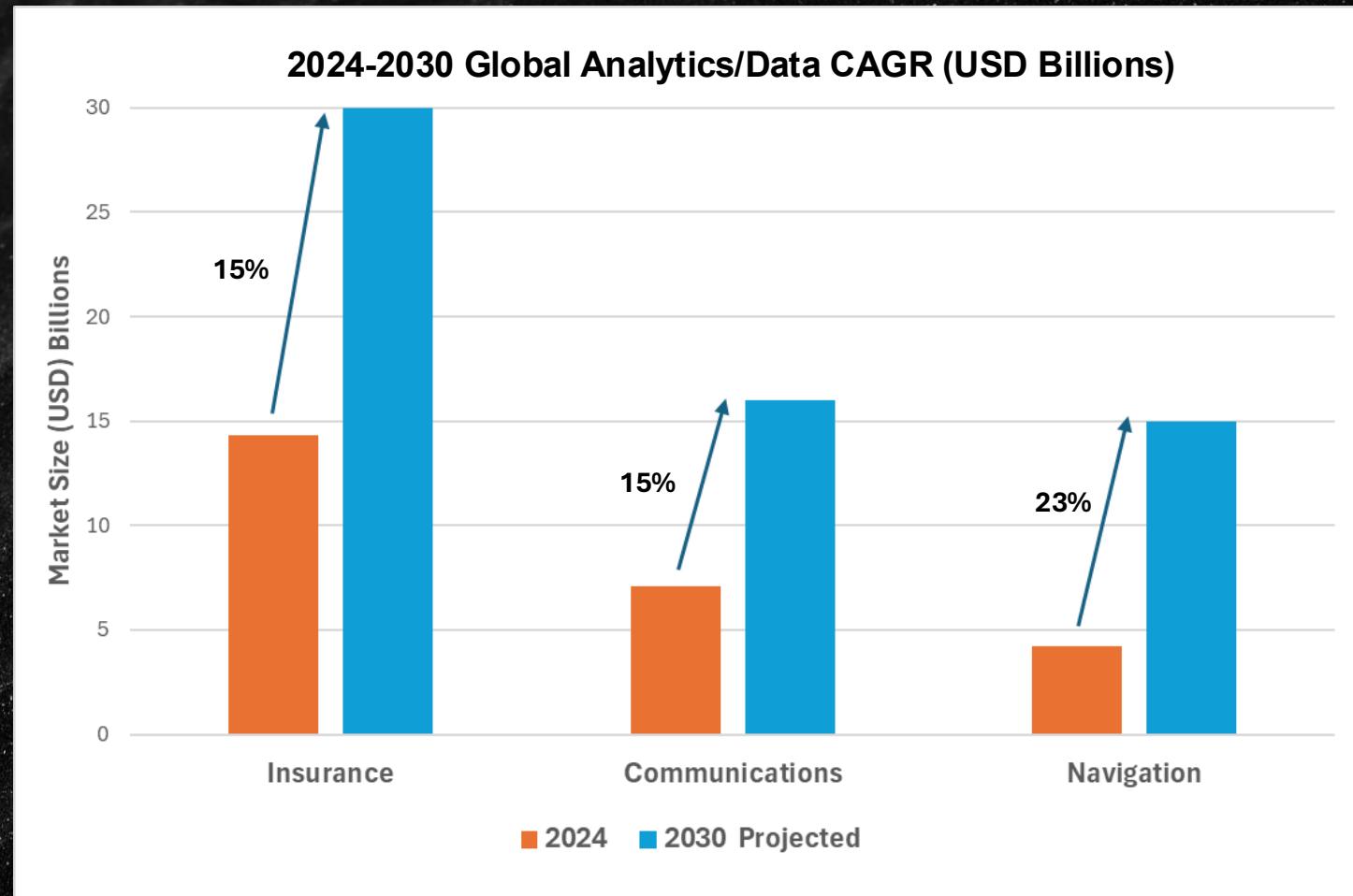
Governments need basemaps for

- Policy formation and decision making
- Natural resource management
- Disaster management
- Land use planning



Analytics/Data Markets Are Growing Strongly

Demand for analytics and data across insurance, communications and navigation is growing strongly, driven by breakthroughs in AI/ML and need for real-time data. Intermap is well-positioned to capitalize on the growth



Sources: Grand View Research (2024), ResearchAndMarkets.com (2024–2032), The Business Research Company (2025), Fortune Business Insights and Market Research Future (2025)

Intermap's products and solutions simplify many large-scale geospatial data challenges and make answers easily accessible by non-expert users

- **Geospatial analytics** are used to visualize geospatial data, including maps, graphs and statistics, which enable problem solving and reveal changes and patterns in data for decision making
- Intermap provides easy access to its NEXTMap data and analytics for a variety of industries, including insurance, aviation, telecom, energy climate resilience and space

Advanced geospatial AI/ML modeling identifies features in imagery, including those collected by satellite and the Company's airborne SAR sensor. Intermap developed this proprietary technology by leveraging its unique SAR imagery archive

Automated system accelerates delivery, enhances resolution and improves accuracy

Extracted features include

- Buildings
- Roads
- Vegetation, including individual trees in cities
- Rivers
- Multi-classification land cover, such as impervious surfaces

Proprietary Sensors

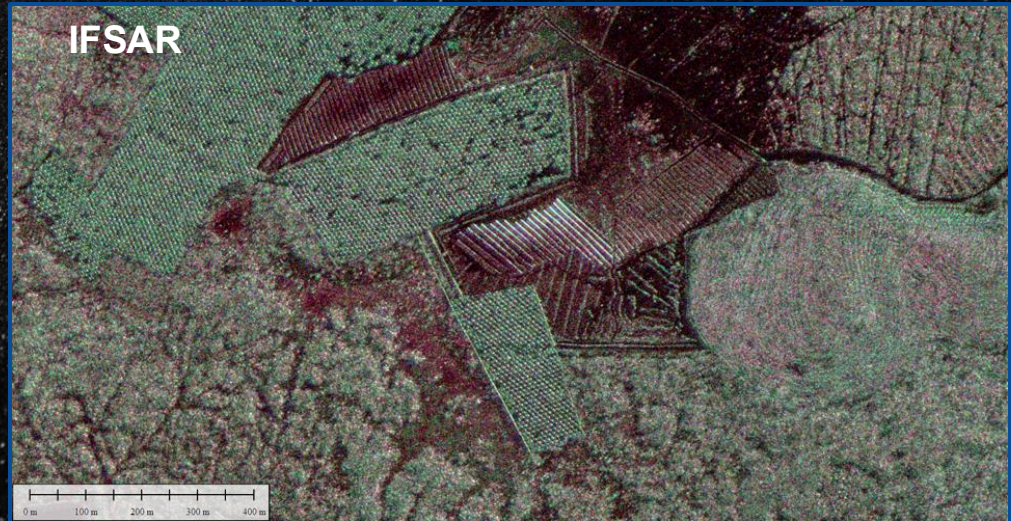
Areas with rugged, mountainous terrain and dense jungles or persistent cloud cover, smoke, smog, fog and haze make it challenging for satellites to collect images and terrain information

Unique sensors send signals through clouds, smoke, rain and foliage to map the terrain

Imagery



IFSAR

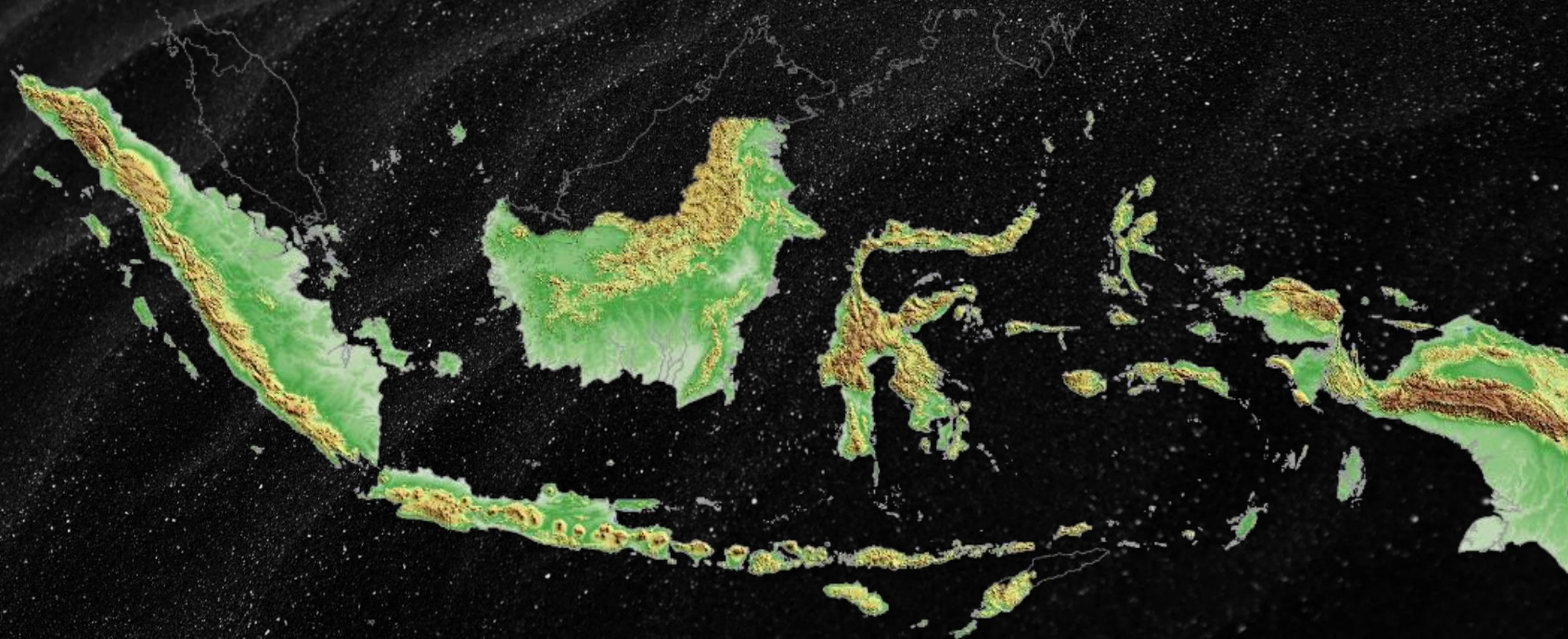


Indonesian One Map Program



In January 2024, Intermap won a \$20 million contract to map the Island of Sulawesi, Indonesia. The contract is the first phase of the Indonesian national topographic basemap program to create a national digital basemap as part of the One Map program

This first phase represents 10% of the country's land area and 10% of the One Map program. Follow-on work is expected over the subsequent four years to complete the remaining 90% of Indonesia's land area, supporting the country's national infrastructure program and long-term development. Learn more [here](#)



Indonesian One Map Program



Year 1, 2024 revenue: \$10.5 million

Years 2 – 5, 2025-2028 Projected Bookings: \$180 million

We are designing a commercialization program for Indonesia that will start when the basemap is complete in year 5

Intermap will maintain the data to keep it current so the Indonesian government can commercialize it

Commercialization leverages Intermap's proprietary application layer and AI-driven processing engine to make complex 3D data accessible and useful for problem solving, even for non-expert users

This proven, high-margin business model is already deployed by Intermap in the insurance, navigation, aerospace, telecommunications, energy and infrastructure industries

Modeled on our LLFD framework with NGA, the program will generate annuity revenue with limited costs

We estimate an annual revenue run rate of ~ \$3 – 5 million to support the Indonesian government as it commercializes its geospatial data

Supporting Governments Around the World



Malaysian Government

Building countrywide basemaps for Malaysia's federal mapping agency

Colombian National Mapping Agency

Providing elevation data for land management and territorial planning

U.S. Geological Survey Alaska Program

Supporting natural resource development, environmental monitoring, climate resilience, infrastructure development and national security

Intermap is working with the National Geospatial-Intelligence Agency (NGA) to create frequently updated elevation datasets in near-real-time that reflect the changing terrain as the environment evolves

- Current and accurate elevation data is critical for global mapping programs and geospatial analysis for high-priority national security areas of interest
- Recently awarded contracts include Low Latency Foundation Data, Janus Geography, LUNO A

GPS-Denied Navigation

Working as a prime contractor with the U.S. Air Force Research Laboratory to develop navigation systems that operate without GPS

- GPS-denied navigation relies on onboard sensors and elevation data to enable aircraft to navigate flight routes safely and efficiently
- Recently awarded contracts include GPS-Denied Navigation, Advanced Battle Management System



Global Solutions for Natural Hazards and Climate Change Risks Quantification



Customizable cloud-based Risk Quantification software helps to mitigate losses from Natural and Climate Change Hazards by delivering location-specific analytics to insurers

- Patented software application, analytics and data provide a property-specific natural risk score that is used by the insurers to determine the premium for property owners
- Acute Weather Hazard maps provide insights into windstorms, hail, lightning and wildfire to help guiding infrastructure design, insurance and emergency planning
- Geophysical Hazard maps provide insight into earthquake, landslide, volcano and tsunami hazards
- Proprietary software provides future-focused data on sea level rise, drought, heat, cold and precipitation stress, supporting long-term planning for agriculture, public health, water management, localization of industrial plants and heating, sewing, water or electricity distribution networks

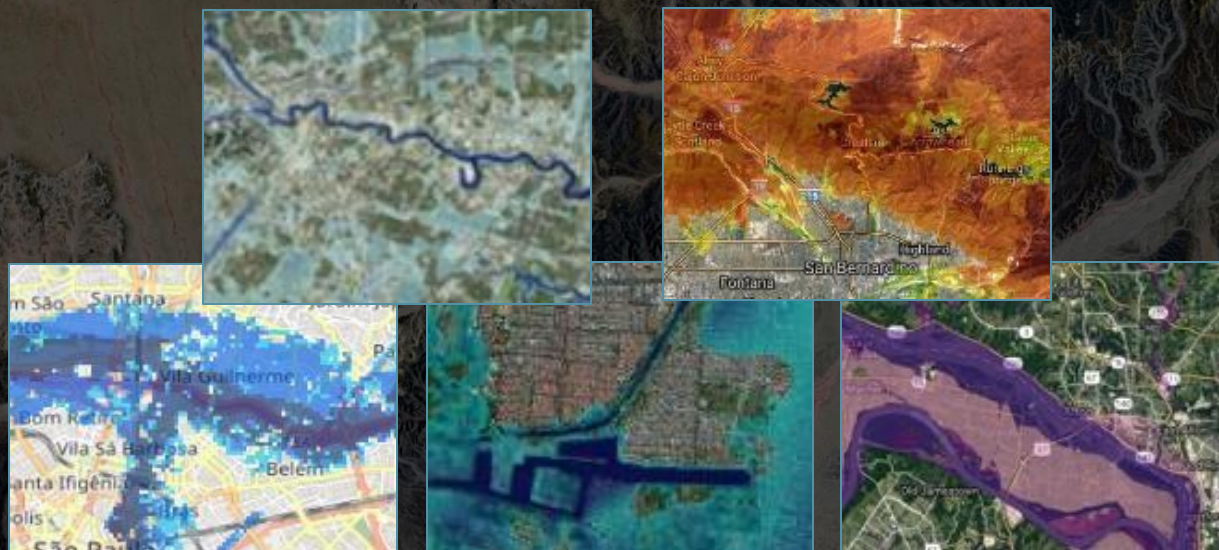
Natural Hazard and Climate Change Maps

Present-Day Hazards

- Fluvial / Riverine Flood
- Pluvial / Torrential Flood
- Surge / Tidal Flood
- Landslide
- Earthquake
- Tropical Cyclone
- Extratropical Storm / Windstorm
- Tornado
- Hail
- Lightning
- Drought Stress
- Precipitation Stress
- Heat and Cold Stress
- Fire Weather
- Wildfire
- Volcano
- Tsunami

Forward-Looking (Climate Change) Hazards

- Fluvial / Riverine Flood
- Pluvial / Torrential Flood
- Surge / Tidal Flood
- Sea Level Rise
- Tropical Cyclone
- Fire Weather
- Drought Stress
- Precipitation Stress
- Heat and Cold Stress



Bolstering Climate Resilience



Supplying the ESG market with global datasets to manage environmental governance

- Intermap's datasets are critical for managing disaster response and humanitarian aid after hurricanes, tsunamis and earthquakes
- Users include Ernst & Young and Royal Haskoning



Improving Safety and Efficiency in the Sky



Intermap teamed with Lufthansa Systems to create the world's first and only high-resolution global elevation dataset for aviation, NEXTView®

- Improves flight safety and situational awareness for aircraft, UAV and ground operations with high-precision detail on obstructions like buildings, vegetation and terrain
- Powers urban air mobility and enables autonomous drone deliveries for medical supplies in Africa
- Certified for use in cockpit systems by the European Union Aviation Safety Agency



Intermap's elevation data and analytics support the telecom industry's expansion of rural broadband services

- Elevation data and analytics are delivered through cloud-based software, enabling fast and accurate answers for network planning, including signal strength evaluation and cell tower placement



Enabling Expansion of Clean Energy



Intermap empowers renewable energy companies to solve project planning and site assessment challenges by providing accurate elevation data and analytics on a global scale

- When budgeting and permitting for new wind and solar projects, planners perform modeling and analysis that rely upon Intermap's global data availability, consistency and quality



Powering Tactical Analytics



Tactical and operations teams leverage Intermap's elevation data and analytics to identify and evaluate the most suitable helicopter landing zone (HLZ) for special missions



Geospatial Intelligence powered by 3D data



Confidential Information Notice



COPYRIGHT NOTICE

All materials contained herein are protected by copyright and are owned or controlled by or licensed to Intermap Technologies, Inc. **UNAUTHORIZED COPYING, REPRODUCTION, REPUBLISHING, UPLOADING, POSTING, TRANSMITTING OR DUPLICATING OF ANY OF THE MATERIAL IS PROHIBITED.**

NEXTMap, IRIS, and FloodScope are registered trademarks of Intermap Technologies, Inc. All rights are reserved.

Questions regarding this disclaimer or any information contained herein may be directed to:

Jennifer Bakken
Executive Vice President and CFO
Intermap Technologies, Inc.
385 Inverness Parkway, Suite 105
Englewood, CO 80112
CFO@intermap.com

Sean Peasgood
Investor Relations
Sean@SophicCapital.com
+1 (647) 260-9266